



School Newsletter

Friday 5th December 2025

'You must love one another as I have loved you.' John 13 v 34.

Working together with love we will provide a happy and nurturing environment where all will, **'learn to love and love to learn'**, making outstanding progress through an enriched and creative curriculum. Through our strong Christian ethos we will celebrate and embrace the richness of our community.

Learn to Love - Love to Learn
'You must love one another as I have loved you.' John 13 v 34



Christmas Events... Please Support!

The school has arranged a number of special events to make the run up to Christmas special for the children. Please check your School Gateway App to make a much needed contribution towards events. Events like theatre productions and Christmas Farm Visits can only go ahead if supported financially by parents.

Thank you in anticipation of your support.



Parent Coffee & Chat

SEND Support



Friday 12th December 2025
2.00pm-3.00pm

Come and join us for a friendly, fun and informal meet-up! We're hosting a relaxed get-together to chat about our support for SEND (Special Educational Needs & Disabilities) children at St Giles. There will be tea, coffee, cakes and biscuits.

Perfect for an afternoon catch-up!

What will we be chatting about?



How we help SEND Learners shine



How we spot and understand different needs



The support we put in place

How we work with you to help every child thrive and flourish

All parents and carers welcome!

There will be no pressure, no formal talks - just a warm space to ask questions, meet staff and to find out what we do.



Wednesday 26th November	School Choir Walsall Arena 7pm	Parents Invited Ticket on Sale Walsall Arena
Thursday 4th December 11am	School Choir Salvation Army Christmas Concert	Parents Invited
Wednesday 10th December	EYFS Nativity (In Church) 11am Nursery +RS 2.15pm Nursery + RG	Parents Invited
Friday 12th December	EYFS/KS1 Pantomime Dick Whittington	Children Only
Wednesday 17th December	KS1 Christmas Cracker in Church. Year 2—9.00am Year 1– 10.15am In School Experience 'Living Nativity' Farm Experience.	Parents Invited Children Only EYFS and KS1
Friday 19th December	Whole School Pantomime Performance– Peter and the Wolf	Children Only
Friday 19th December	Class Parties/ Non –Uniform Outdoor Day Christmas Disco	Children Only



Nursery-Reception– Year 1 and 2 Christmas
Pantomime Friday 12th December

No story captures the imagination of children more
than

DICK WHITTINGTON,

when they will be transported to the magical setting
of OLD LONDON TOWN.

Packed solid with comedy, excitement and adventure, the children will love to cheer their hero DICK WHITTINGTON and boo the evil CAPTAIN BLOOD. They will roar with laughter at the antics of IDLE JACK, SARAH THE COOK and Dick's crazy cat ELVIS. All this is brought to life by a cast of 5 top entertainers from the world of PANTOMIME (playing 8 character parts). It's all good old fashioned fun that you would normally see in a top line theatre.

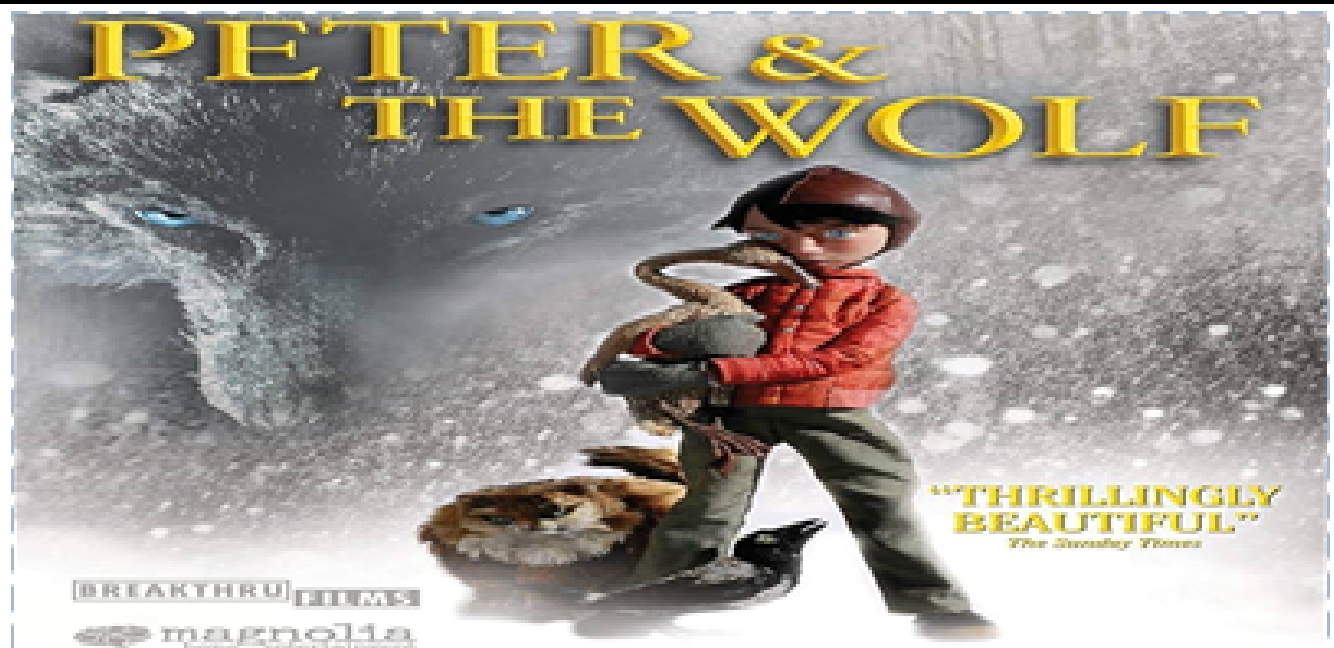
Tickets are available on the School App... (£5.00)



Living Nativity Farm Visit
Wednesday 17th December
(Nursery-Reception-Year 1 and Year 2)

Southfields Farm will be making a special Festive Visit to St Giles' C.E. Primary, bringing the Nativity Story to life with donkeys and farm animals for the children to experience up close

Tickets available on the School App. £5.00



Friday 19th December KS1 and KS2

Christmas Theatre Production

Peter and the Wolf.

The plot of "Peter and the Wolf" follows a boy named Peter who disobeys his grandfather by going into the meadow to play with his animal friends: a bird, a duck, and a cat. A wolf appears, eats the duck, and Peter, with the help of the bird, uses a rope to capture the wolf. Hunters arrive and are about to shoot the wolf, but Peter stops them. The story concludes with Peter, the hunters, and the grandfather taking the captured wolf to the zoo, while the duck is shown to have been swallowed whole and is still alive.

Ticket available for purchase on the School App (£5.00)



Christmas Musical Events

4.00-4.30pm St Giles' Church

Wednesday 10th December

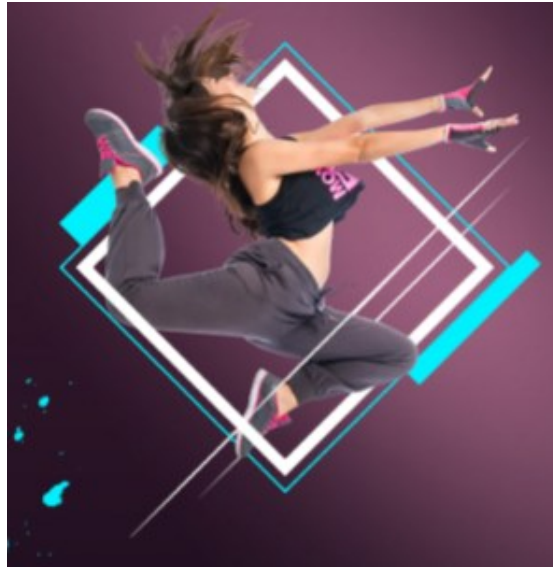
Performers: Wednesday Recorder and
Violin Groups

Thursday 11th December

Performers: School Choir

Friday 12th December

Performers: Friday Recorders and
Saxophone Groups



End Of Term Dance Showcase

***Parents are invited to an end of term
Dance Showcase 4.00pm-4.30pm.***

Performance Times

Friday 5th December Class 4.00-4.30pm

Tuesday 9th December Class 4.00-4.30pm

Wednesday 10th December Class

4.00-4.30pm

Thursday 11th December Class 4.00-4.30pm

DANCE CLASSES WILL RESTART

W/C 5th January

UNICEF Class Charter Presentations In Church

Parents and Carers Welcome

9.00am start

Dates	UNICEF Charters Presentation Order
Friday 3 rd October,2025	6G
Friday 10 th October,2025	6S
Friday 7 th November,2025	5S
Friday 14 th November,2025	5G
Friday 21 st November,2025	4G
Friday 28 th November,2025	4S
Friday 5 th December,2025	3G
Friday 12 th December,2025	3S
Friday 9 th January,2026	2G
Friday 16 th January,2026	2S
Friday 23 rd January,2026	1G
Friday 30 th January,2026	1S
Friday 6 th February,2026	Reception & Nursery

**WE ARE A UNICEF GOLD
RIGHTS RESPECTING SCHOOL**

**Children's rights are learned, understood
and lived in this school.**



PARENT FINES FOR MISSING SCHOOL: WHAT YOU NEED TO KNOW

The fine for school absences across the country is **£80 (per parent/child) if paid within 21 days**, or **£160 if paid within 28 days**.

The local council can also decide to prosecute. If you're prosecuted and attend court because your child hasn't been attending school, you could get a fine of up to £2,500.

What happens if my child misses school without a good reason?

If your child is absent and you haven't received advance permission from the headteacher to take your child out of school, the school and local council may take action.

Before that, your child's school and your local council are expected to support you to improve the child's attendance before any measures are put in place.

These measures can include:

- **Issue a fixed penalty notice, otherwise known as a 'fine'** – Walsall Council can give each parent a fine. If you do not pay the fine after 28 days you may be prosecuted for your child's absence from school.
- **Seek an Education Supervision Order from the family court** – if the council thinks you need support getting your child to go to school but you're not co-operating, they can apply to a court for an Education Supervision Order. A supervisor will be appointed to help you get your child into education. The local council can do this instead of, or as well as, prosecuting you.

Prosecute you – this means you have to go to court. You could get a fine, a community order or a jail sentence up to three months. The court could also give you a Parenting Order.

Please continue to support the school in securing good attendance.

Internet safety risks for school-age children

There are 4 main kinds of internet safety risks for children.

Content Risks

Illegal, inappropriate, harmful, e.g. Fake news, deep fake images, racism, misogyny, self-harm, extremism, pornography.

Contact Risks

Bullying, grooming, sexual harassment, exploitation, influencing, 'end-to-end encryption.

Conduct Risks

Acting in ways that might hurt others or being victims of this behaviour—privacy, digital footprint, health and wellbeing, nudes and semi-nudes, copyright and live streaming.

Contract Risks

Contracts, membership agreements, or terms and conditions that they aren't aware of or don't understand. Online gambling, advertising, phishing scams, financial scams and micro-transactions.

Term Dates

2025/26 academic year

Autumn term 2025

- Term starts: Monday 1 September 2025
- Half term holiday: Monday 27 October 2025 to Friday 31 October 2025

Term ends: Friday 19 December 2025

Spring term 2026

- Term starts: Monday 5 January 2026
- Half term holiday: Monday 16 February 2026 to Friday 20 February 2026

Term ends: Friday 27 March 2026

Summer term 2026

- Term starts: Monday 13 April 2026
- Half term holiday: Monday 25 May 2026 to Friday 29 May 2026

Term ends: Monday 20 July 2026

Non-Pupil Days

~~**INSET 1 Monday 1st September 2025**~~

~~**INSET 2 Wednesday 1st October 2025**~~

INSET 3 Wednesday 28th January 2026

INSET 4 Wednesday 24th June 2026

INSET 5 Monday 20th July 2026



If you have any concerns about a child, trust your instincts and contact the NSPCC Helpline. Our specialist team will listen, advise and take any action needed.

An estimated 1 in 20 children have experienced sexual abuse. And child sexual abuse is under-reported by adults. It's time for that to change.

It's never too soon to talk to us. And what you share could make a life-changing difference to a child.

You can contact the NSPCC Helpline by calling 0808 800 5000, emailing help@NSPCC.org.uk or completing our report abuse online form.

Due to an increase in demand across our service, our voice Helpline is currently available 11am–5pm Monday to Friday. You can still email help@NSPCC.org.uk or complete our report abuse online form at any time for free. You don't have to say who you are.

If you think a child is in immediate danger, please call the police on 999 straight away.