

# Walsall SEND Service Communications



Walsall Council

**SUMMER 1 2025**

## **WELCOME TO THE WALSALL SEND SERVICE SUMMER TERM COMMUNICATIONS**

These communications are designed for parents and carers of children and young people with Special Educational Needs and Disabilities (SEND). Here, we share important updates, celebrate successes, and highlight opportunities for you to engage with and shape SEND services in Walsall. We are committed to working together to improve support, services, and outcomes for children and young people with SEND. Your voice matters, and we welcome your feedback and involvement.

## **ARE YOU ON OUR MAILING LIST?**



Stay up to date with the latest SEND news, updates, and events in Walsall by joining our mailing list. If you are not already receiving our emails, please contact: [localoffer@walsall.gov.uk](mailto:localoffer@walsall.gov.uk)

## **CELEBRATING SUCCESS**

- Our very first Youth SEND Forum took place on Thursday, 10 April, and it was a fantastic success! A big thank you to the amazing group of children and young people aged 8 to 14 years who attended, and shared their ideas. If you know of a child/ young person who would like to get involved please get in touch.
- FACE Walsall's 'Meet the SEN Team' coffee mornings have been a great success, parents enjoyed finding out about the team and what they do. If you haven't booked on there is still time - the last one in the series is on **Tuesday 20th May at the East Locality Hub, Brownhills.**

**TIME TO  
Celebrate**

## CELEBRATING SUCCESS CONT.

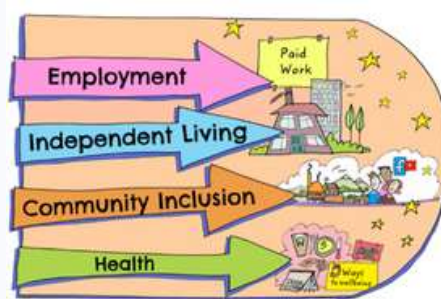
In April 2025, we brought together parents, carers and partners from education, health and social care for a dedicated Preparing for Adulthood (PfA) Co-Production Day.

The event provided a valuable opportunity to listen, reflect and collaborate on how we support children and young people with SEND to lead full and meaningful lives.

The day focused on sharing lived experiences of PfA in action, celebrating our strengths and identifying clear areas for development. Participants engaged in thoughtful and purposeful discussions about what is working well and where improvements are needed.

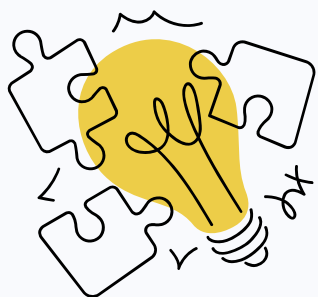
Together, we explored how to strengthen our shared approach to supporting children and young people to prepare for:

- Higher education and/or employment
- Independent living
- Participating in society
- Good health



The day reaffirmed the value of genuine co-production and our collective commitment across Walsall to ensuring every child and young person with SEND is supported to achieve positive outcomes across all areas of their life.

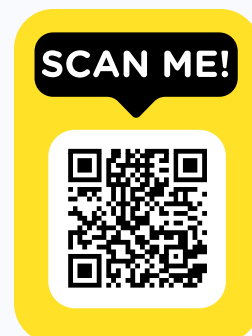
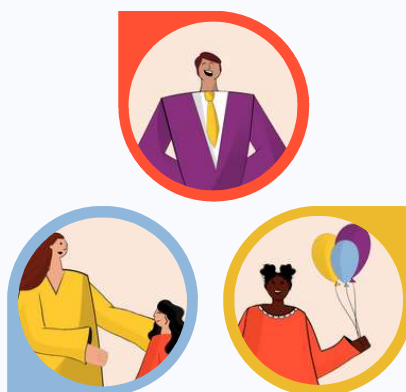
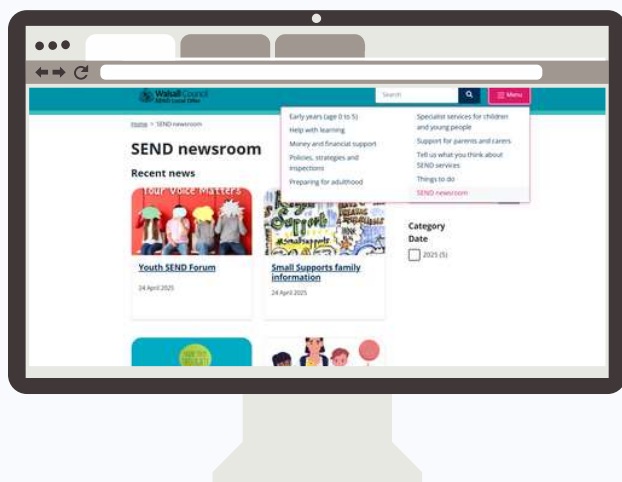
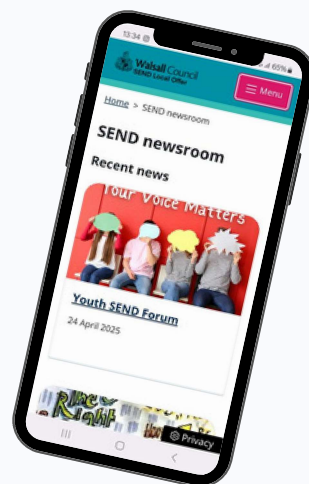
We look forward to continuing this work at our follow-up session in May, where we will begin co-producing our local PfA development plan.



## NEW WALSALL SEND LOCAL OFFER NEWSROOM!

We are pleased to announce we now have a SEND Newsroom function on the Local Offer.

The SEND Newsroom is a place where we can share news from the partnership, upcoming events, opportunities and important updates to the service.



Check it out now: [SENDNewsroom](#)

## PARENT/CARER SUPPORT

# SEND PARENT PARTNERSHIP GROUP

Are you a parent or carer of a child or young person with **Special Educational Needs and/or Disabilities (SEND)**? We want to hear from you!

Join our **SEND Parent Partnership Group** to share your experiences, provide valuable feedback, and help shape SEND services in Walsall

### Why Join?


- **Have your say** - Share your thoughts, ideas, and experiences.
- **Make a difference** - Contribute to improving SEND support and services in Walsall.
- **Connect with others** - Meet with other parents and carers like you!

**Together, we can create positive change!**

If you're interested in joining, we'd love to hear from you. Please get in touch with Sam:

 [samantha.house@walsall.gov.uk](mailto:samantha.house@walsall.gov.uk)

 **Walsall Council**

**FACE WALSALL**  
PARENT CARER FORUM  
Families & Carers Empowered

**Are you supporting a child or young person with special educational needs or a disability aged 0-25?**

**FACE Walsall** are a parent and carer forum coproducing with education, health and social care providers to achieve better outcomes for our children and young people

**Dates for the Diary**  
What makes you mad, sad or glad?

**Come and chat over zoom**  
Wed 14 May 7pm-8pm - Email for zoom link

**Meet the Walsall SEN Team**

**Tues 20 May 9.30 - 11.30**  
Walsall Family East Hub  
Silver Court, Brownhills, WS8 6HA

**Information Fair**  
Fri 20 June 10.00 - 12.00  
Bloxwich Active Living Centre, High St, Bloxwich, WS3 2DA

**To book or for more information contact**  
[Facewalsall@gmail.com](mailto:Facewalsall@gmail.com)



## Neurodiverse Parent Group

### Discover Your Unique Community



Supportive Community



Discussions and Awareness



Workshops and Guest speakers

A group for neurodiverse/SEND parents, parents of neurodiverse/SEND children, or pre-diagnosis.

All Welcome.

Free Weekly Support Sessions  
Walsall and Darlaston

Email: [love@mettaminds.co.uk](mailto:love@mettaminds.co.uk)  
[www.mettaminds.co.uk/blogs](http://www.mettaminds.co.uk/blogs)



From Monday  
23rd September  
2024



## FREE FAMILY FIRST AID AWARENESS WORKSHOP

Free first aid workshop available for:

- Expectant and new parents
- Parents of children 0-5 years



Wednesday 18th June 09:30-11:00  
Manor Farm Community  
Association, King Georges  
Crescent, Rushall, Walsall, WS4 1EU

Topics include:

- Primary survey-CPR
- Using a Defibrillator
- Recovery position
- Choking
- Minor injuries
- First aid kit



To book your free place, email  
[familyhubs@walsall.gov.uk](mailto:familyhubs@walsall.gov.uk)



## Walsall SENDIASS and FACE Walsall Coffee Morning

Tuesday 13<sup>th</sup> May 2025  
10am -12 noon



Do you have questions or want support from others.

Do you want to find out :

- What Walsall SENDIAS do?
- What FACE Walsall do?
- Information on Education, Health and Care plans?
- The law on SEND?
- Mediation with the Local Authority?
- Appeals and Tribunals relating to SEND?

Then come along to our coffee morning and chat to Walsall SENDIASS and FACE Walsall (Walsall's Parent/Carer Forum)

To be held at Manor Farm Community Association, King George Crescent, WS4 1EU

To book a place please [Click here](#)

For further Information contact [walsallsendiass@family-action.org.uk](mailto:walsallsendiass@family-action.org.uk)



## Making a needs assessment request for an EHCP with Walsall SENDIAS



If you're wanting to make a Parental lead needs assessment request for an EHCP then come along to this workshop for a step by step guide on how to complete the form. We will also give information about the process and timeframes

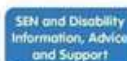
COME AND JOIN OUR WORKSHOP ☺

Thursday 15<sup>th</sup> May 2025  
12.30-2pm

Manor Farm Community Centre,  
Rushall, WS41EU (Room 3)

[Click here to book a place](#) or if you have any questions please drop us an email:

[walsallsendiass@family-action.org.uk](mailto:walsallsendiass@family-action.org.uk)



## HEALTH SUPPORT

### NEW MONTHLY DROP IN FOR PARENT/CARERS OF CHILDREN IN WALSALL ON AN NHS PAEDIATRIC WAITING LIST.

The supported waiting partnership network meetings will be running every month where there will be guest speakers to advise on a variety of monthly topics and many services who support with access to additional support for you and your child.

Each monthly meeting will be held on the **Last Wednesday of the month** at **Manor Farm Community Association, Rushall, WS4 1EU**

For more information or further advice please call: **01922 656463** or email [pals.officer@nhs.net](mailto:pals.officer@nhs.net)



#### Transitions without tears

Is your child on a waiting list to be seen by a paediatric health service?

**Come and join us at Manor Farm Community Association for the first meeting of the Supported Waiting Network.**

We have guest speakers to advise on a variety of monthly topics and many services who support with access to additional support for you and your child. Come and chat to other parents, find out what additional support is available across the partnership with our monthly themed support group.

For further advice or information, telephone **01922 656463** or email [pals.officer@nhs.net](mailto:pals.officer@nhs.net)



🕒 9.30am-11.30am 📅 28 May 2025

📍 Manor Farm Community Association  
King George Cres, Rushall, Walsall, WS4 1EU



#### No school? No problem - holiday survival!

Is your child on a waiting list to be seen by a paediatric health service?

**Come and join us at Manor Farm Community Association for the first meeting of the Supported Waiting Network.**

We have guest speakers to advise on a variety of monthly topics and many services who support with access to additional support for you and your child. Come and chat to other parents, find out what additional support is available across the partnership with our monthly themed support group.

For further advice or information, telephone **01922 656463** or email [pals.officer@nhs.net](mailto:pals.officer@nhs.net)



🕒 9.30am-11.30am 📅 25 June 2025

📍 Manor Farm Community Association  
King George Cres, Rushall, Walsall, WS4 1EU



**Small Supports** are local small social care organisations which can help your loved one to live in their own home, if they:

- are aged 16 and above and need bespoke person-centred support
- have a learning disability and/or autism, or a mental health condition and/or have experienced significant challenges or trauma
- are in a mental health or secure hospital currently or are at risk of hospital admission due to a breakdown of support, lack of the right support, the need to move accommodation, or to independent living

For more info please contact Small Supports on: [SmallSupports@ndti.org.uk](mailto:SmallSupports@ndti.org.uk)



## YOUTH OPPORTUNITIES

**SHORT BREAKS** provide opportunities for children and young people with a disability to spend time away from their families, relax, develop new friendships, take part in new experiences, and have fun doing positive activities. They also give families a break from their caring responsibilities, a chance to rest or spend time with their other children.

The Short Breaks booklet and expression of interest online form for the activity schemes for every holiday (excluding Christmas) is available six weeks before each school holiday. For information on how to sign up please email:

[shortbreaks@walsall.gov.uk](mailto:shortbreaks@walsall.gov.uk)



### SEND FRIENDLY FAMILY RUN SWIM SCHOOL & HOLIDAY CLUBS

**MAVERICK SPORT** is a family run swim school that offers SEND inclusive and SEND Specialist classes.

**For Parents:** Swim classes sizes are small and accommodate a variety of needs, lessons are tailored to the ability of the child.



**Maverick** also run holiday clubs run are SEND inclusive and offer a variety of fun and engaging activities.

**For Schools:** Maverick offer a 'pop up' pool service to deliver swimming lessons in school.

For more info use this link: [\*\*MaverickSport\*\*](#)



## YOUTH OPPORTUNITIES



TUESDAY EVENING  
6:45-7:30

### DANCE - ABILITY

Dance and movement for children with disabilities

All ages welcome  
Simply come along!



33B OLD SQUARE  
WALSALL  
WS1 1QA

LA STUDIOS  
Performing Arts Hub  
Email: [debbiemorganla@icloud.com](mailto:debbiemorganla@icloud.com) Web: 0191 456 1000 or 0191 456 1001

### DANCE-ABILITY

Dance and Movement classes for children with disabilities

#### When & Where?

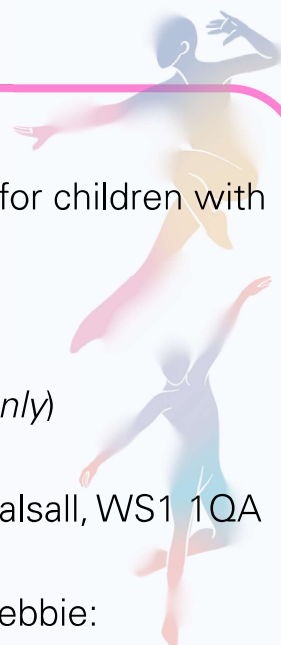
Tuesday Evenings (*term time only*)

6:45pm- 7:30pm

LA Studios, 33B Old Square, Walsall, WS1 1QA

For more info please contact Debbie:

**[debbiemorganla@icloud.com](mailto:debbiemorganla@icloud.com)**



## NEW SESSIONS & WORKSHOPS FROM SASSY SENSORY SURPRISES!



Coming to you Summer 2025!

### WATCH THIS SPACE!

Sign up to Sassy's mailing list to be the first to know about the new events, interactive workshops and sensory stations coming soon!

for more info use this link: **[SassySensorySurprises](https://www.sassysensorysurprises.co.uk)**

## EVENTS



### SAVE THE DATE SEND INFORMATION FAIR

FRIDAY 20<sup>TH</sup> JUNE - 10AM - 12PM @ BLOXWICH ACTIVE LIVING



### Join Us for a Fun-Filled Healthy Lifestyle Day at SNAP!

We're bringing the community together for a day of FUN, FITNESS, and CONNECTION!

#### What to expect

- Local Community Organisations
- Stalls & Fun Activities
- Bouncy Castle & Face Painting
- Fruit Kebab Making
- DJ & Music
- Adventure Playground & Soft Play

This event is all about celebrating holistic well-being, diversity, and unity within our community. It's an opportunity to connect, support each other, and promote healthy living!



The Neurodiversity Show is the UK's premier exhibition dedicated to neurodiversity.

The show aims to empower education, parents, the workplace, individuals and professionals. This marks a strategic evolution to create a more inclusive and comprehensive platform for showcasing innovations, resources, and support tailored to individuals with neurodiverse differences.

**COMING TO THE NEC, BIRMINGHAM FRIDAY 9TH AND SATURDAY 10TH MAY**

For more information and to book your tickets visit: [NeurodiversityShow25](https://www.neurodiversityshow25.co.uk)



## SEND SERVICES FEEDBACK

Please could you spare a few minutes to complete this feedback form on your experience with the SEND Services. Please use the QR code or link below. Your feedback is greatly appreciated.

[SENDSERVICEFeedback](#)

Thanks



## FEEDBACK

If you have any feedback or wish something to be included in the next SEND Communications please do not hesitate to get in touch.

**Next Issue:** SEND Services Newsletter Summer 2025

**Submit your updates by 23<sup>rd</sup> May to be included!**

Please use the below emails

Sam: [samantha.house@walsall.gov.uk](mailto:samantha.house@walsall.gov.uk)

Local Offer: [localoffer@walsall.ov.uk](mailto:localoffer@walsall.ov.uk)



**Thank you for being part of the Walsall SEND community!**



**Walsall Council**



**FACE WALSALL**  
PARENT CARER FORUM

