



# St Giles CE Primary School SEND Celebration Newsletter




Spring Term 2023



Article 2, Article 12,  
Article 17, Article 23

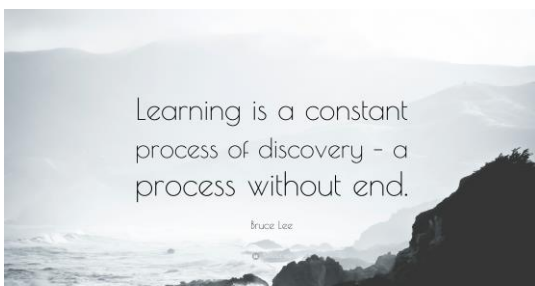
## The St Giles SEND team:

Let us introduce you to the  
St Giles C.E. SEND team...

	<u>Mrs Mavi</u> SENCo & Inclusion Strategic Lead
	<u>Ms Morris</u> Key Stage 2 SEND Lead (Wednesday/Thursday)
	<u>Miss Evans</u> EYFS & Key Stage 1 SEND Lead (Monday/Tuesday/Friday)

If you have any queries or concerns or would like to discuss anything in relation to your child, please do not hesitate to contact us via 01902 368308.

## Something to reflect upon...



## What's New!

Welcome to our Spring Term SEND Celebration Newsletter!

In this edition, we will be focusing upon some of the bespoke interventions that take place in school and also signposting you to where you can find more information on all things SEND.

The LA has lots of support. Please find the link below:-  
<https://go.walsall.gov.uk/children-and-young-people/send-local-offer>

The website provides quick links to the following support.

Collaboration and engagement	What is SEND?	Walsall Community Living Directory
SENDIAS	Education and learning	Mental health
Early years	Health and wellbeing	Education, Health and Care plans
Travel and transport	Social care	Early help

Whilst it provides a range of important information it does also offer a directory of services available in the Walsall borough, a link to Walsall's SEND Newsletter and a section on family support. We would recommend accessing the website to see what information and additional services are available!

Walsall SENDIAS are hosting a SEND Fair on **Thursday 16<sup>th</sup> February, 5pm-7pm** at Manor Farm Community Centre.

Various services and organisations will be there so parents and young people can get advice and information, along with finding out more about local support and activities. The SENDIAS team will also be available to provide free and impartial, information, advice and support.

Here is the link to register for free tickets:  
<https://www.eventbrite.co.uk/e/walsall-sendias-send-fair-tickets-506434819177>



## A Spotlight on...Intervention

At St Giles we offer a range of tutoring interventions to children covering key areas to those children who may need extra support, or in some cases whole year groups may access tutoring in order to further their progress. Below, you will find listed just some of the interventions that we offer here at St Giles!

### **Third Space Learning**

Third Space Learning is a DfE approved Maths tutoring programme which supports pupils who will benefit from additional support in Maths. Pupils have a weekly timeslot of one hour where they meet with a tutor online to receive bespoke maths tutoring tailored towards their needs. When beginning the programme, pupils undertake a diagnostic assessment to identify their individual learning gaps and misconceptions. This assessment is then used to inform subsequent tutoring sessions. Each week, pupils then log in to a secure interactive classroom for a fully personalised lesson with their tutor. They have the same tutor each week and communicate with them via their headset and a shared screen. After each session, teachers receive a detailed report for each pupil showing topics covered, skills practiced and progress made and these reports can help inform planning for pupils emerging needs.

### **Oxford Reading Buddy**

Oxford Reading Buddy (ORB) is a new programme that we have started to use here at St Giles. ORB is an online service that helps children with their reading. It contains hundreds of Oxford books and book-quizzes all matched to the the children's individual reading level.

The benefits of Oxford Reading Buddy:

- It will give your child access to a whole library of online books so they can practise their reading.
- It provides them with a 'buddy' to help them understand what they are reading.
- It enables your child to check how they are doing and to make sure that they have books at a suitable level.
- It reports back to Class Teachers so they are aware of pupil's emerging needs and where they may need more support.
- It motivates children to practise their reading by giving them badges for reading well!

Remember, Oxford Reading Buddy is compatible with smartphones, computers and tablets and all pupil's have their login in their Reading Diary!

### **Fisher Family Trust – Lightning Squad**

FFT Tutoring with the Lightning Squad is a reading tutoring programme where pupils work in small groups with a tutor to improve their reading skills. The tutoring is a blended approach with face-to-face tutoring supported by an online tutoring platform. The tutoring activities are designed and structured to improve reading skills, fluency, comprehension, spelling and phonics. Pupils work through 82 specially written, engaging and illustrated stories. Research has demonstrated that pupils using Tutoring with the Lightning Squad make learning gains of between 3 and 5 months in reading attainment.

### **Nessy**

Nessy Reading and Spelling is an effective online resource that covers 5 years of literacy development from Year 1 to Year 6. It can be used in school and at home using the child's unique log-in. Initially developed with Dyslexia in mind, it can support any child in their literacy journey through its range of fun teaching videos and games.

How Nessy Works:

**Assessment:** Students begin by taking the Nessy Challenge to establish their baseline reading and spelling skills. The program then automatically assigns personalised reading and spelling target lessons.

**Reporting:** Reporting allows parents and teachers to identify areas of instruction, and monitor their child's progress.

**Individualised Approach:** Children work independently through a series of lessons with videos, games and worksheets.

**Rewards:** Children collect Nessy nuggets as a reward for their effort. They can trade their nuggets for games and virtual trophies.

# A to Z of SEND Terms:

## Communication and Interaction

Children and young people with speech, language and communication needs have difficulty in communicating with others and this difficulty is identified as *Communication and Interaction*. This may be because they have difficulty saying what they want to, understanding what is being said to them or they may not understand or use social rules of communication.

*Language difficulties* can take many different forms: some pupils have difficulties understanding what they've heard, while others find it hard to construct sentences or retrieve the appropriate vocabulary item. Some pupils find it hard to use their language skills to communicate with others - their grammar and vocabulary may be fine, but they struggle to interact with others. Older pupils may struggle with creative thinking skills like prediction and inference.

Children with *social communication needs* find it difficult to communicate with others for a range of reasons. They may have difficulties taking part in a conversation, taking turns in a conversation, staying on topic, taking the listener's needs into account, reading non-verbal cues etc. They may also have difficulty understanding what the speaker is saying to them or have other speech and language difficulties. Some pupils may experience a mild difficulty that can be managed through high quality teaching, while others with more significant difficulties may require group and/or 1:1 intervention with advice recommended by a speech and language therapist.

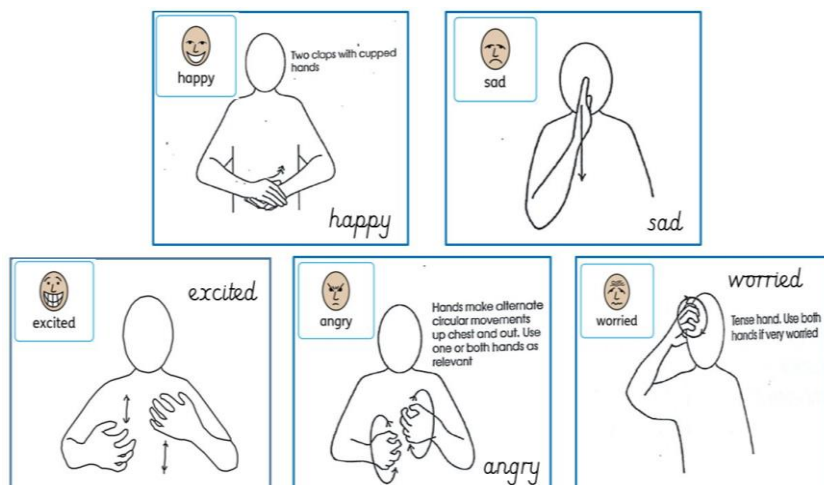
### WOW Pupil Achievements Gallery:

Well done to all of our pupils who receive additional tutoring through the interventions listed above. Staff who facilitate these interventions always comment on what an asset the pupils are to our school! They demonstrate a willingness to learn and excellent behaviour for learning. Well done!



### This term's spotlight Makaton Symbols...

This term in school pupils have been focusing upon some previously learnt Makaton signs and symbols. Children have looked at how to sign a range of emotions to express how they are feeling to others. Take a look at some of the ways that you are able to sign key emotions. Can you learn these signs and symbols with your child? You may even like to use one each morning to explain how you are feeling!



The next round of **APDR's** will be distributed in March. Please get in touch if there is anything you wish to discuss around your child's targets.



# In Our Hands

"If a community values it's children, it must cherish it's parents and carers"

## Working Together Event For the Children of Walsall with SEND

Following on from our successful sessions in October, we ask parents and carers to come together with us again to revisit and evaluate the discussions and plans previously made during our last sessions.

We would like to know your thoughts on the updates and developments and to continue to help us shape services for children and young people with SEND in Walsall.



Please can we ask all attendees to book a free ticket using the Eventbrite link under the venue of your choice:

### 13 February, 10:30 – 13:30

Willenhall Chart Centre,  
19 Gomer St, Willenhall WV13 2NS  
[www.eventbrite.co.uk/e/504662648567](http://www.eventbrite.co.uk/e/504662648567)

### 14 February, 10:30 – 13:30

Manor Farm Community Association,  
King George Crescent, Walsall, WS4 1EG  
[www.eventbrite.co.uk/e/504441888267](http://www.eventbrite.co.uk/e/504441888267)

### 15 February, 10:30 – 13:30

Frank F Harrison Community Association  
Beechdale Centre, Stephenson Square,  
Bloxwich, Walsall WS2 7DY  
[www.eventbrite.co.uk/e/504783961417](http://www.eventbrite.co.uk/e/504783961417)

### 15 February, 17:30 – 19:00

In Our Hands Virtual  
Microsoft Teams  
To order ticket and for meeting link go to:  
[www.eventbrite.co.uk/e/504827892817](http://www.eventbrite.co.uk/e/504827892817)

### 16 February, 10:30 – 13:30

Nashdom, Sun Street,  
Walsall WS1 4AL, UK  
[www.eventbrite.co.uk/e/504786890177](http://www.eventbrite.co.uk/e/504786890177)

**Refreshments will be provided at face to face events.**

For further information contact: [localoffer@walsall.gov.uk](mailto:localoffer@walsall.gov.uk) or 0778 727 4566



Walsall Council





# Sassy Sensory

## Swimming & Sports Sessions

Exciting new Sassy sessions coming soon, tailored for children within Walsall with special educational needs and disabilities and their families

**THIS IS FUNDED BY WALSALL COUNCIL SHORT BREAK SERVICES**

*Sessions are for children with special education needs and disabilities in Walsall*

**TAKING PLACE @**

**Bloxwich Active Living Leisure Centre**

High St, Bloxwich, Walsall WS3 2DA

**Session will take place 1st Sunday of every month  
starting Sunday 5th February**



*For more information regarding these sessions or to sign up to the sassy mailing list please get in touch*

✉ [toni@sassysensorysurprises.co.uk](mailto:toni@sassysensorysurprises.co.uk)

🌐 [www.sassysensorysurprises.co.uk](http://www.sassysensorysurprises.co.uk)

📱 @sassysensorysurprises

We understand family circumstances can change at short notice and we anticipate these sessions will be in high demand. If you book on and are unable to attend please contact us to allocate the space to another family.

**Please book on one session (swimming or sports)**

