



St Giles CoE Primary School

SEND Celebration Newsletter




Summer Term 2022



Article 2, Article 12,
Article 17, Article 23

The St Giles SEND team:

Let us introduce you to the St Giles CoE
SEND team...

	<p><u>Mrs Mavi</u> SENCo & Inclusion Strategic Lead</p>
	<p><u>Ms Morris</u> Key Stage 2 SEND Lead (Wednesday/Thursday)</p>
	<p><u>Miss Evans</u> EYFS & Key Stage 1 SEND Lead (Monday/Tuesday/Friday)</p>

If you have any queries or concerns or would like to discuss anything in relation to your child, please do not hesitate to contact us via 01902 368308.

Welcome!

Welcome to our very first St Giles CoE SEND
Celebration Newsletter!

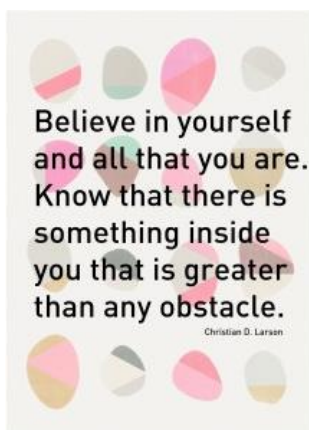
Our recent Coffee Morning that took place in school on 24/05/22 was a huge success, and we would like to thank all of you that were able to attend! It was great to be able to host our first Coffee Morning in school since the pandemic, and it was a brilliant opportunity to meet with you all, discuss any queries or concerns and invite professionals along that work with your children also!



You said... we listened...

During the coffee morning, we asked you to complete a short questionnaire which focused upon how satisfied you were with the support, experiences and approaches that we use to support your child/children who have special educational needs. The responses were very positive and we were delighted with the results! When asked what we could do differently, we received some responses that asked us to, *“provide more updates and communication.”* In recognition of this, we will continue to update you via our usual channels but will also publish our new newsletter on a termly basis to share important news, updates and key information!

Something to reflect upon...



A Spotlight on... Top Transition Tips!

Transition is a normal part of life and building resilience when things change is a fundamental part of our transition process. At St Giles, we aim to make transitions between year groups as smooth and seamless as possible. Some of the ways in which we will support your child in moving up to their next year group include:

- You child will have the opportunity to meet their new teacher and have a transition morning.
- Where needed, a transition 'Social Story' will be created for use in school and at home to build up familiarity in new places and people your child will come across.
- Staff will meet to discuss key needs of children before September in order to be ready to support them.

You may also wish to support your child over the summer holidays by talking about their new class and teacher in a positive way, and think about what your child may look forward to. Useful books about going back to school include and books about feelings such as :



A Spotlight on our Super SEND Professional...

Beccie Hawes



BA(Hons) QTS, MEd (Inclusion and Diversity in Education), PG Cert (Professional Studies – SENCo and SpLD – Dyslexia), AMBDA

Beccie has worked in all aspects of Special Educational Needs including mainstream, additionally resourced provision and specialist settings. She has extensive experience as a SENCo, Inclusion Manager, Lead Local Authority SEND Advisory Teacher and has set up and led an inclusion advisory service. Beccie is currently proud to be the Head of Service with Cadmus Inclusive part of Cadmus Services which is based in Walsall. This service has a national reach and actively supports schools with all aspects of providing a high quality education for vulnerable learners.

A to Z of SEND Terms:

Autism

Being autistic doesn't mean you have an illness or disease. It means your brain works in a different way from other people. Autism is a processing difference that can have an impact on many areas of a person's life. Autistic people will experience differences in three key areas:

1. Social Understanding and Communication,
2. Sensory Processing and Integration,
3. Flexible Thinking, Information Processing and Understanding.

While autistic people share these similar characteristics to some degree, they are also all different from each other. This is because autism is considered a spectrum. The autism spectrum is not linear from high to low but varies in every way that one person might vary from another. There is no 'typical' autistic person. Every autistic individual has their own strengths, differences and needs, their own life journey and their own unique story.

WOW Pupil Achievements Gallery:



Well done to Nursery Pupils for learning how to *Makaton sign* the song, "You are my sunshine!"

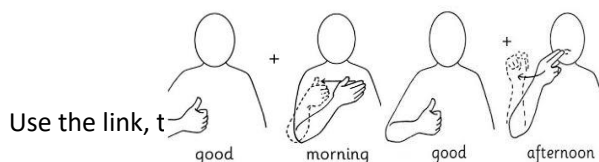


The next round of **APDR's** will be distributed W/C: 18.07.2022. Please get in touch if there is anything around your child's targets you wish to discuss.



This term's spotlight Makaton Symbols...

In each termly newsletter we will share two new Makaton symbols that you can learn and use with your child at home. In this term's newsletter, we look at signing 'good morning/ afternoon.' Your child may already know these signs as they are used as daily greetings in school. If you learn them too, you can sign together!



Use the link, t

https://www.youtube.com/watch?v=ZjgNIA_woyo